

# FULL TIME COURSES FOR SCHOOL LEAVERS 2026

Barnet  
Southgate  
College



[barnetsouthgate.ac.uk](https://barnetsouthgate.ac.uk)



# CONTENTS



<b>WHY BARNET AND SOUTHGATE COLLEGE?</b>	<b>3</b>
<b>HOW TO FIND US</b>	<b>4</b>
<b>SUBJECTS AND CAMPUSES</b>	<b>5</b>
<b>HOW TO APPLY</b>	<b>6</b>
<b>A LEVELS</b>	<b>7</b>
<b>T LEVELS</b>	<b>8</b>
<b>BTECS, GCSES AND OTHER QUALIFICATIONS</b>	<b>9</b>
<b>APPRENTICESHIPS</b>	<b>10</b>
<b>SEND AND SUPPORTED STUDIES</b>	<b>11</b>
<b>STUDENT SERVICES</b>	<b>12</b>
<b>WHAT'S IT LIKE TO BE A STUDENT?</b>	<b>13</b>
<b>EDUCATION AND EMPLOYER PARTNERS</b>	<b>14</b>
<b>COLLEGE FACILITIES</b>	<b>15</b>

**Disclaimer:** The details in this publication were correct at the time of going to press and we aim to provide accurate and relevant information to inform your choices. However, changes to the provision since the printing of this prospectus may occur so please check details via the Barnet and Southgate College website: [www.barnetsouthgate.ac.uk](http://www.barnetsouthgate.ac.uk)

# WHY BARNET AND SOUTHGATE COLLEGE?



## WE'RE BIGGER AND BETTER

We're a large college in London with over 13,000 students, delivering more than 20 subjects across three main campuses. Joining us means being part of a large and vibrant community that benefits you as you prepare for the workplace or university. The diverse environment offers an excellent opportunity to meet a broader range of people, and a larger college brings with it bigger and better facilities with state-of-the-art campuses.

## WE'RE RELEVANT TO YOU

Whether you're looking for a course to progress onto university, a specific job or an apprenticeship, what's paramount to us is being in line with the needs of our local

economy and working closely with strategic partners to adapt the content of courses to ensure it's relevant to employers and university progression. We offer a broad range of full and part time courses in: BTECs, A Levels, T Levels, foundation degrees, technical and professional qualifications, vocational training, work-based training, apprenticeships plus education and employment pathways for people with learning difficulties and disabilities.

## WE'RE PROUDLY VOCATIONAL

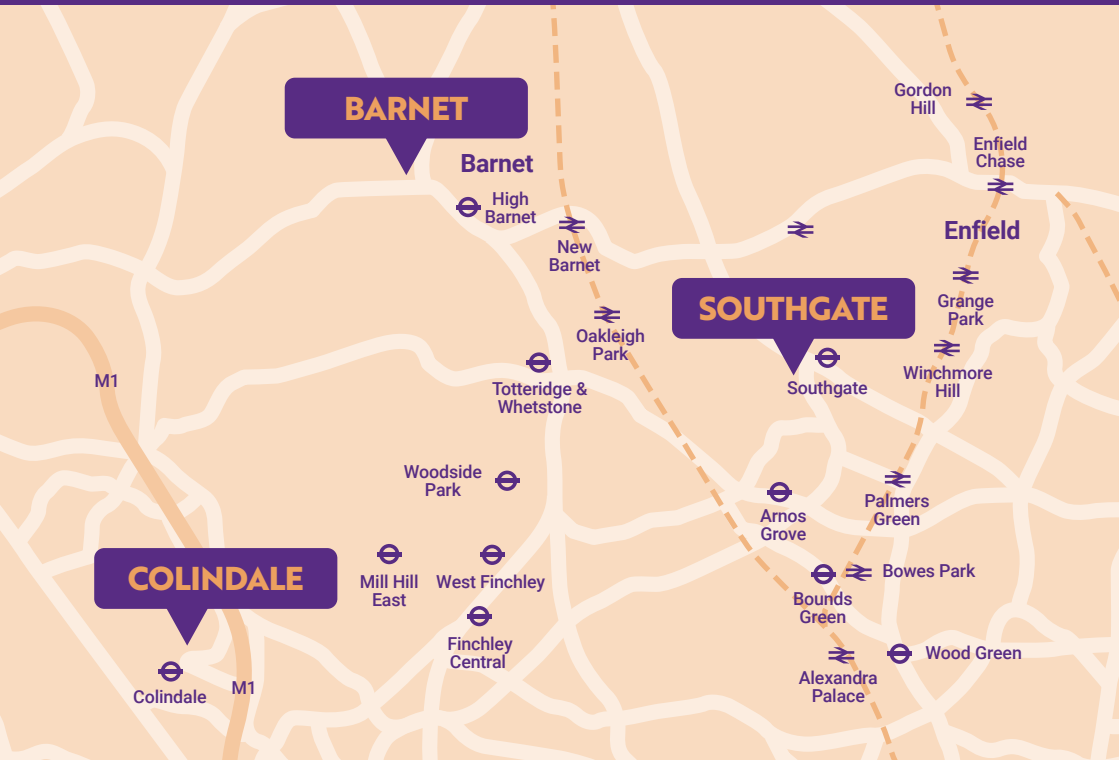
We focus on giving you the real-world skills that employers are actually looking for. We constantly study the job market and engage directly with businesses and experts. This means we design

our courses to fill any skills gaps, so you can be confident that when you train with us, you'll be job-ready from day one.

## WE'RE PART OF THE LOCAL ECONOMY

Employability is at the core of everything we do. Work placements and industry experience are integral to most courses and it's this experience that gives our students the competitive edge when looking for a job or securing a place at university. The future economy needs a vocational and technically skilled workforce. At Barnet and Southgate College we'll expand your horizons and help you align your skills with the jobs that are out there, plus you'll be joining a friendly, supportive and successful college.

# HOW TO FIND US



## BARNET CAMPUS

Wood Street  
Barnet  
EN5 4AZ

Tube: High Barnet  
(Northern Line, Zone 5)

Bus: 34, 84, 107, 184, 234, 263, 307,  
326, 384, 389

## COLINDALE CAMPUS

7 Bristol Avenue  
London  
NW9 4BR

Tube: Colindale  
(Northern Line, Zone 4)

Bus: 125, 186, 204, 303, 324

## SOUTHGATE CAMPUS

High Street  
Southgate  
London N14 6BS

Tube: Southgate  
(Piccadilly Line, Zone 4)

Bus: W6, W9, 121, 125, 298,  
299, 382

# SUBJECTS AND CAMPUSES

## Our full-time courses are based at the following campuses

We have three main campuses, each with its own character and unique environment.

### BARNET

- A Levels
- Animation, Games Design and VFX
- Apprenticeships
- Art, Design and Architecture
- Aviation
- Business
- Childcare and Education
- Computing and IT
- Creative Media
- English and Maths
- ESOL
- Fashion
- Foundation Learning
- Health and Social Care
- Performing Arts
- Photography
- Science
- T Levels
- Travel and Tourism

### COLINDALE

- Apprenticeships
- Beauty Therapy
- Bricklaying
- Construction Multi-Skills
- English and Maths
- ESOL
- Foundation Learning
- Gas Installation
- Hairdressing
- Heat Pump Installation
- Sports – Juventus Academy
- Plumbing
- T Levels
- Uniformed Protective Services

### SOUTHGATE

- Carpentry and Joinery
- Computing and IT
- Electrical Installation
- Engineering
- English and Maths
- ESOL
- Esports
- Fitness and Personal Training
- Foundation Learning
- Plumbing
- SEN
- Science
- Sport
- T Levels



### STUDENT SUPPORT

Students at every campus have full access to Student Services and Learning Resource Centres (LRCs).

# HOW TO APPLY

## FIND YOUR COURSE

- See details of all our full time courses on our website: [barnetsouthgate.ac.uk/16-18-year-olds](http://barnetsouthgate.ac.uk/16-18-year-olds)
- Come to an open day – meet our tutors and find out more about the college. Book your place: [barnetsouthgate.ac.uk/open-events](http://barnetsouthgate.ac.uk/open-events)
- Follow us on **Instagram, Facebook, TikTok, and LinkedIn.**

## APPLY ONLINE

- On our website, go to **COURSES** at the top of the homepage and find the course you'd like to do.
- Then click the orange **APPLY ONLINE** button where you'll be taken to the Application Portal. Please create an account and fill in your details.
- Submit your application.

## WHEN WE GET YOUR APPLICATION, WE'LL MAKE YOU AN OFFER

- An unconditional offer means you can enrol.
- A conditional offer means you need to meet some requirements, usually exam results.

## COME IN AND ENROL

We will tell you when you must come in to enrol by

- **Text**
- **Email**
- **Social media**
- **Post**

You will be asked to come to a campus and must bring:

- **Proof of ID**
- **Proof of your qualifications**

## ANY ADDITIONAL NEEDS?

If you require support in your learning because of learning difficulties or disabilities please email [als@barnetsouthgate.ac.uk](mailto:als@barnetsouthgate.ac.uk) after you apply

## WHAT QUALIFICATIONS DO I NEED FOR MY NEW COURSE?

We have standard entry qualification requirements, and these apply to most courses; however you should examine the full course profile on the college website to check specific requirements for specialist areas.

LEVEL YOU'D LIKE TO STUDY	QUALIFICATIONS NEEDED BEFORE YOU CAN START THE COURSE
<b>LEVEL 3</b> <ul style="list-style-type: none"> <li>● A Levels</li> <li>● T Levels</li> <li>● BTEC Diplomas</li> <li>● UAL Qualifications</li> </ul>	<ul style="list-style-type: none"> <li>● 5 GCSEs at Grades 9-4 (6 GCSEs for A Levels)</li> <li>● Level 2 course with Merit/Distinction grades</li> </ul>
<b>LEVEL 2</b> <ul style="list-style-type: none"> <li>● BTECs</li> <li>● UAL Qualifications</li> <li>● GCSE Higher Grades</li> <li>● Functional Skills</li> </ul>	<ul style="list-style-type: none"> <li>● 4 GCSEs at Grade 3 OR</li> <li>● Appropriate Level 1 qualifications</li> </ul>
<b>LEVEL 1</b> <ul style="list-style-type: none"> <li>● BTECs</li> <li>● UAL Qualifications</li> <li>● Functional Skills</li> </ul>	To study at this level, you don't need any formal qualifications

English and maths qualifications are essential for employers and universities.

**You will have the opportunity to achieve these qualifications if you do not have GCSE English and/or maths at grades 9-4.**

ESOL students from overseas without UK qualifications will need to take a language assessment so we can determine the best course for them.

# A LEVELS



- The vast majority of our students progress to university, with many going to Russell Group institutions.
- Students benefit from a fully supportive tutorial system uniquely designed to meet the needs of all A Level students.
- All A Level courses are full time and taught at the Barnet Campus.
- Successful applicants will need to study a minimum of three A Level subjects as part of the package.
- The A Level package is for students aged 16-19.
- You will discuss your three A Level subject choices at the interview stage of your application.

## INCLUSIVE SIXTH FORM

There is an A Level programme for students who seek additional flexibility to achieve at A Level.

This is ideal for students dealing with emotional issues or medical needs.

There are only 20 places available.

## YEAR 14 REVISION AND RESIT PROGRAMME

For year 14 students who wish to boost their grade profile and progress to Higher Education.

### Subjects offered

Biology, Business, Chemistry, Economics, Further Mathematics, English Language and Literature, English Literature, Government and Politics, History, Law, Mathematics, Media Studies, Music, Photography, Physics, Physical Education, Psychology, Sociology, Extended Project.

## A LEVELS WITH SPORT

Students can apply to join sports academies including Tottenham Hotspur men's and women's football, athletics, basketball, boxing and tennis.

# T LEVELS



- Each T Level is equivalent to 3 A Levels and helps young people develop the knowledge, attitude and practical skills to thrive in the workplace.
- T Level students spend 80% of the course in the classroom, 20% in a meaningful industry placement.
- Designed with leading businesses and employers.
- Specialist staff and facilities, individualised support, and meaningful placements.
- T Level qualification enables readiness for work, university, or higher apprenticeship.

## CONSTRUCTION

Technical Qualification in Plumbing and Heating Engineering (Colindale Campus)

## COMPUTING AND IT

Digital Infrastructure/Support Services (Southgate Campus)

Digital Production, Design and Development (Barnet Campus)

## EARLY YEARS/ CHILDCARE

NCFE/CACHE Technical Qualification in Education and Early Years (Barnet Campus)

## ENGINEERING

Electrical and Electronic Engineering (Southgate Campus)

## ELECTRICAL INSTALLATION

Electrotechnical Engineering (Southgate Campus)

## SCIENCE

Laboratory Science (Barnet Campus)

Supporting the Adult Nursing Team (Southgate Campus)

## TV, MEDIA AND FILM PRODUCTION

Media, Broadcast and Production (Barnet Campus)

## INDUSTRY PLACEMENTS

Industrial placement team ensures great opportunities for work placements and vital industry experience.

# BTECS, GCSES AND OTHER QUALIFICATIONS



- BTECs are high-quality, career-focused qualifications grounded in the real world of work.
- BTECs are developed with employers and higher education experts.
- College also issues UAL (University of the Arts London) and NextGen/AIM Diplomas for creative courses.

## BTECs/Diplomas offered in:

### FOUNDATION LEARNING AND GCSE COURSES

Bridging Course options, Functional Skills up to GCSE level in Business, IT, Art and Design, Creative Media, GCSE Science package

### LEVEL 1

Applied Science, Bricklaying, Caring for Children, Carpentry and Joinery, Electrical Installations, Hair and Barbering, Plumbing, Sports

### LEVEL 2

Applied Science, Art and Design, Beauty Therapy, Bricklaying, Business, Computer Animation & Games, Creative Media Production, Early Years Educator, Electrical

Installation, Engineering, Esports, Hairdressing and Barbering, Health and Social Care, ICT, Performing Arts, Sports, Travel and Tourism, Uniformed Protective Services

### LEVEL 3

Architecture, Applied Science, Art and Design, Aviation, Beauty Therapy, Business, Commercial Photography/Moving Image, Creative Media Production, Early Years Educator, Electrical Installation, Engineering, Esports, Fashion, Games, Animation and VFX Skills, Hairdressing, IT (Hardware and Games Development), IT (Software and IT for Business), Performing Arts, Sports, Travel and Tourism, Uniformed Protective Services

# APPRENTICESHIPS



- Rated as 'Outstanding' for apprenticeships by Ofsted.
- High standard training provision, fantastic achievement rates.
- Apprenticeships mix on-the-job and classroom-based training.
- Earn a wage and learn new skills towards a nationally-recognised qualification.

## WE OFFER APPRENTICESHIPS IN:

- Improvement Technician Level 3
- Team Leader Supervisor Level 3
- Lean Manufacturing Operative Level 2
- Process Leader Level 4
- Improvement Practitioner Level 4
- Multi-channel Marketer Level 3
- Content Creator Level 3
- Customer Service Level 3
- Carpentry and Joinery Level 2
- Business Administration Level 3
- Gas Engineering Level 3
- Customer Service Level 2

## CONTACT

Telephone: 020 8266 4333

Email: [apprentice@barnetsouthgate.ac.uk](mailto:apprentice@barnetsouthgate.ac.uk)

# COURSES FOR STUDENTS WITH LEARNING DIFFICULTIES AND/OR DISABILITIES (SEND)



We offer a specialist curriculum that is flexible and individualised, providing pathways of learning from school and progression to main College programmes, work training, employment, supported living and the local community.

We offer courses for students with Special Educational Needs and Disabilities (SEND). Inclusion and the opportunity to progress in the college, community and the world of work are at the core of our beliefs and values.

These courses meet the needs of young people who present with a range of special educational needs working at different cognitive levels ranging from profound to moderate.

Our personalised study programs are planned and delivered in order to enable students develop their

targets and aspirations as outlined in their Educational Health and Care plans.

We offer full time study programmes that run between September and June from 9:30am – 3:00pm which allows time for transport drop offs. Students attend college four days a week.

## **Our programmes follow three pathways at our Southgate campus:**

- **SKILLS AND INDEPENDENCE**
- **COLLEGE**
- **WORK/EMPLOYABILITY**

## **These pathways can overlap depending on students' needs and goals. All pathways enable students to:**

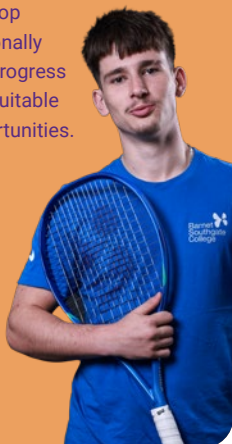
- Develop their Maths and English skills and knowledge
- Support preparation for adulthood
- Prepare for building relationships
- Develop independence
- Support the development of social and communication skills
- Develop emotional resilience and confidence

# STUDENT SERVICES



## OUR VISION

To support students to succeed on their courses, develop personally and progress into suitable opportunities.



- Student-centred approach to ensure students are engaged, enjoy learning, recognise and develop abilities, work towards next steps and succeed.
- Facilitate transition into adulthood, employment, education or training.
- Workshops cover: Sexual Health, Drugs, British Values, Safeguarding, Positive Behaviour, Motivation.
- Sessions help students progress to higher education or employment.
- Personalised 1:1 support and enrichment (trips, employer visits, guest speakers, group debates).
- Inclusive environment for additional support needs.
- Support with English and Maths, exam access arrangements, speech, language and social communication, self-esteem and confidence.

# WHAT'S IT LIKE TO BE A STUDENT?

“ You get lots of experience on the practical side of things where we work in a salon environment



Tanya, Level 3 Beauty Therapy

“ The most valuable aspects of my college experience was gaining course knowledge and making connections

Victoria, BTEC Level 3 Extended Diploma in Business

“ What I've learnt in college I applied in my job that very same week

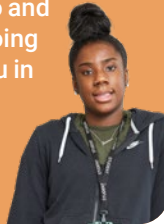


Egland, Level 2 Electrical Installation

“ T-Levels has opened many opportunities for me! I really liked the way the course is laid out, as well as all the topics covered

Angelina, T Levels, Early Years Educator

“ In college, it's a lot more about what you want to do and how it's going to help you in the future



Lauren, Level 2 Art and Design

“ My journey in this college was truly unforgettable; a journey filled with growth, supportive teachers and countless moments that shaped who I am today

Silsila, Extended Diploma in IT Information and Technology

“ I'd recommend the college for someone who wants to pursue sport



Justin, Level 4 Sport and Exercise Science

“ I'm glad I chose a college as it really accommodates my needs in terms of research and studying

Baran, A Levels in Politics, Psychology and Economics

“ The course has given me much more confidence and my favourite part is the cooking



Maizie, Supported Learning

# EDUCATION AND EMPLOYER PARTNERS

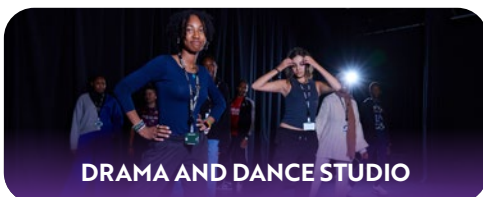
We partner closely with institutions and employers to deliver work experience, training, and industry-standard course content.

We prepare students for all their educational and career aspirations.



# COLLEGE FACILITIES

The College has state-of-the-art facilities across all our campuses



# VISIT US AT ONE OF OUR OPEN EVENTS



## BARNET

Wednesday 5 November 3:30pm-6:30pm

Wednesday 18 March 3:30pm-6:30pm

Wednesday 17 June 3:30pm-6:30pm

## SOUTHGATE

Wednesday 12 November 3:30pm-6:30pm

Wednesday 11 March 3:30pm-6:30pm

Wednesday 10 June 3:30pm-6:30pm

## COLINDALE

Wednesday 19 November 3:30pm-6:30pm

Wednesday 4 March 3:30pm-6:30pm

Wednesday 3 June 3:30pm-6:30pm



[barnetsouthgate.ac.uk](http://barnetsouthgate.ac.uk)  
020 8266 4000

November 2025